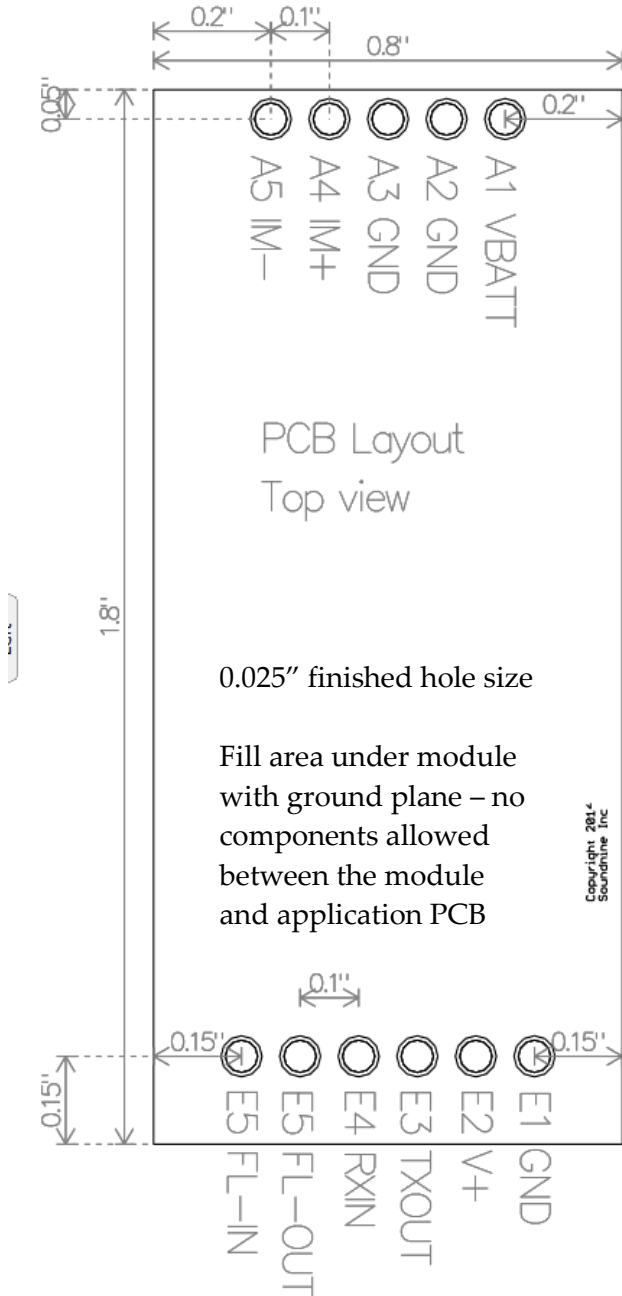




# Inductive Modem Module

## 15011A Standard Layout



Pin	Name	Description
A1	VBATT	Optional power supply input connection. 3.0V – 4.5V
A2	GND	
A3	GND	
A4	IM+	IM transmit + to coupler
A5	IM-	IM transmit – to coupler
E1	GND	
E2	V+	Positive power supply input 3.3V – 26V
E3	TXOUT	Serial transmit output (RS232 or logic level)
E4	RXIN	Serial receive input (RS232 or logic level)
E5	FLAGOUT	3.3V logic level flag output
E6	FLAGIN	3.3V logic level flag input

Module height over application PCB is 7mm

### S9 Part numbers:

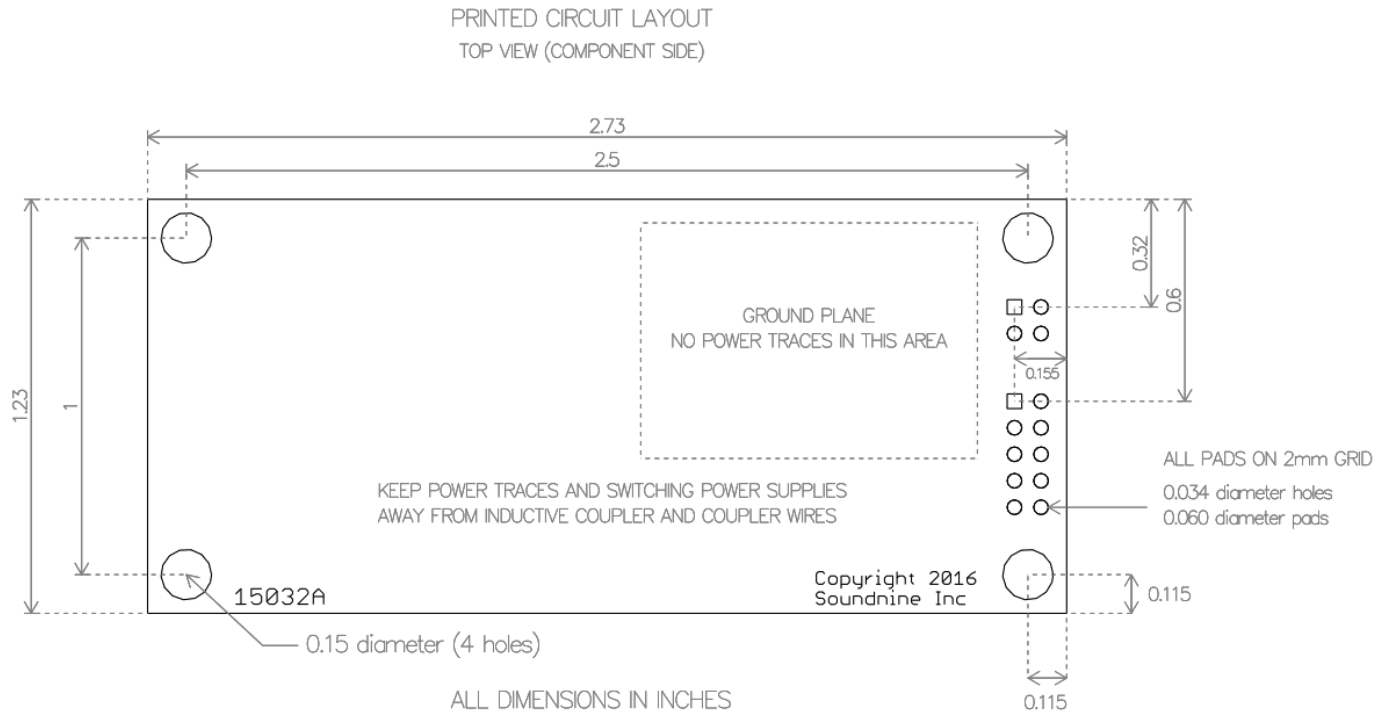
RS232 serial interface: 15011A-1

Logic-level serial interface (3.3V): 15011A-2

With carrier board: 15032-1 or 15032-2

(pin compatible with SBE IMM)

## 15032A Footprint Compatible with SBE IMM



### J1 10-pin Connector

Pin	Name	Description
1	IM+	IM transmit + to coupler
2	IM-	IM transmit - to coupler
3	FLAGIN	3.3V logic level flag input
4	FLAGOUT	3.3V logic level flag output
5	LLS TX OUT	Logic level serial transmit output (15032A-2 hardware only)
6	TXOUT	RS232 transmit output (15032A-1 hardware only)
7	LLS RX IN	Logic level serial receive input (15032A-2 hardware only)
8	RXIN	RS232 receive input (15032A-1 hardware only)
9	Vin +	Input voltage (3.3V - 26V)
10	GND	Power supply return

### J2 4-pin Connector

Pin	Name	Description
1	IM+	IM transmit + to coupler
2	GND	Power supply return
3	IM-	IM transmit - to coupler
4	Vin +	Input voltage (3.3V - 26V)

